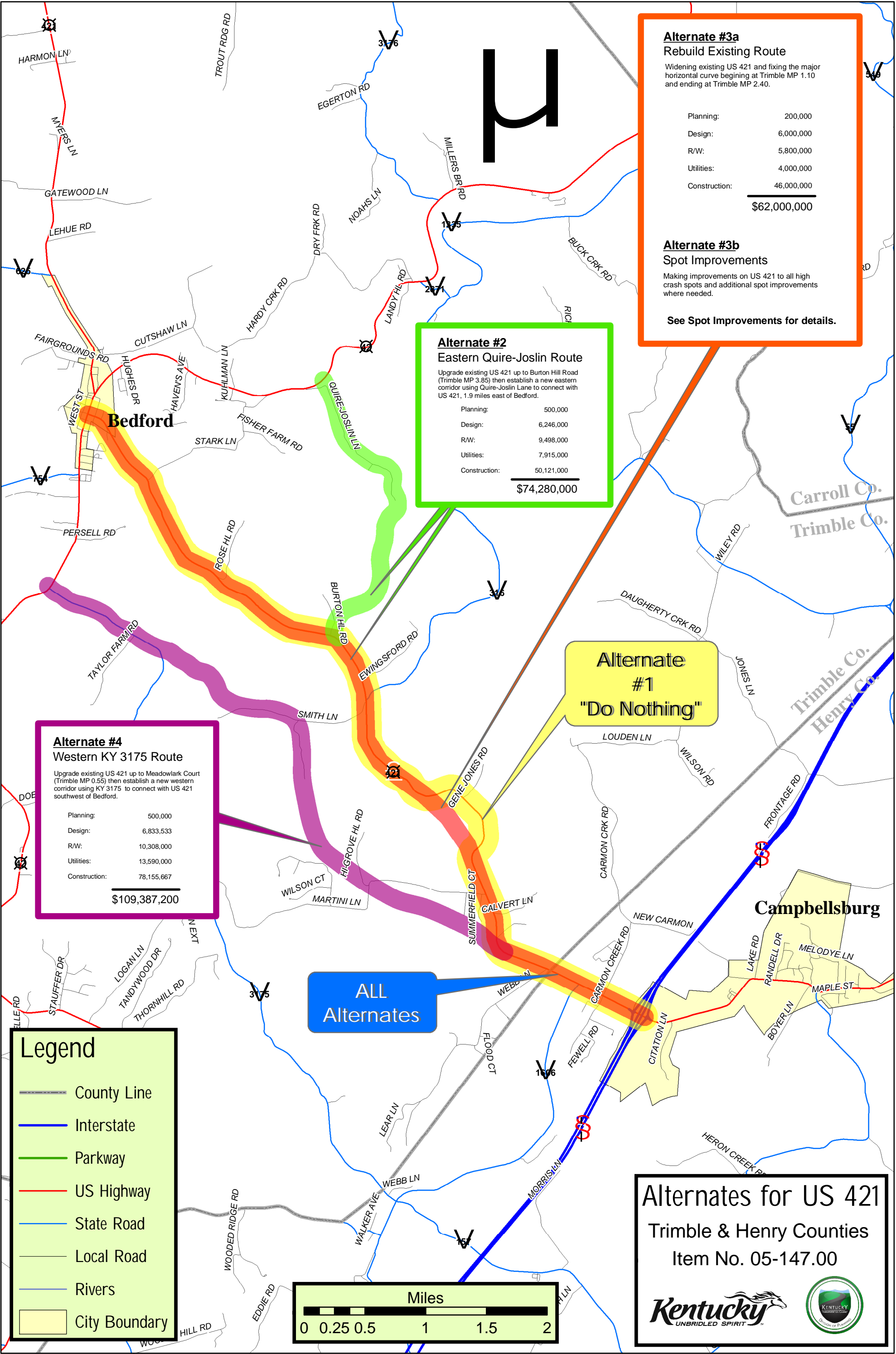


Appendix G

*Map of Alternatives &
Aerials of Spot Improvements*



Spot Improvements

Alternate #3b

Trimble & Henry Counties

Item No. 5-147.00



Spot Improvement @ Crash Spot #1

Widen US 421 to 4 lanes for safer access near the I-71 Interchange. (Henry MP 24.113 to 24.486)

Design:	300,000
R/W	350,000
Utilities	300,000
Construction	4,300,000
	\$5,250,000



Spot Improvement @ Crash Spot #2

After a field review, it was concluded that the geometry and sight distances for this spot are adequate and no further improvements are needed. (Trimble MP 0.90 to 1.00)

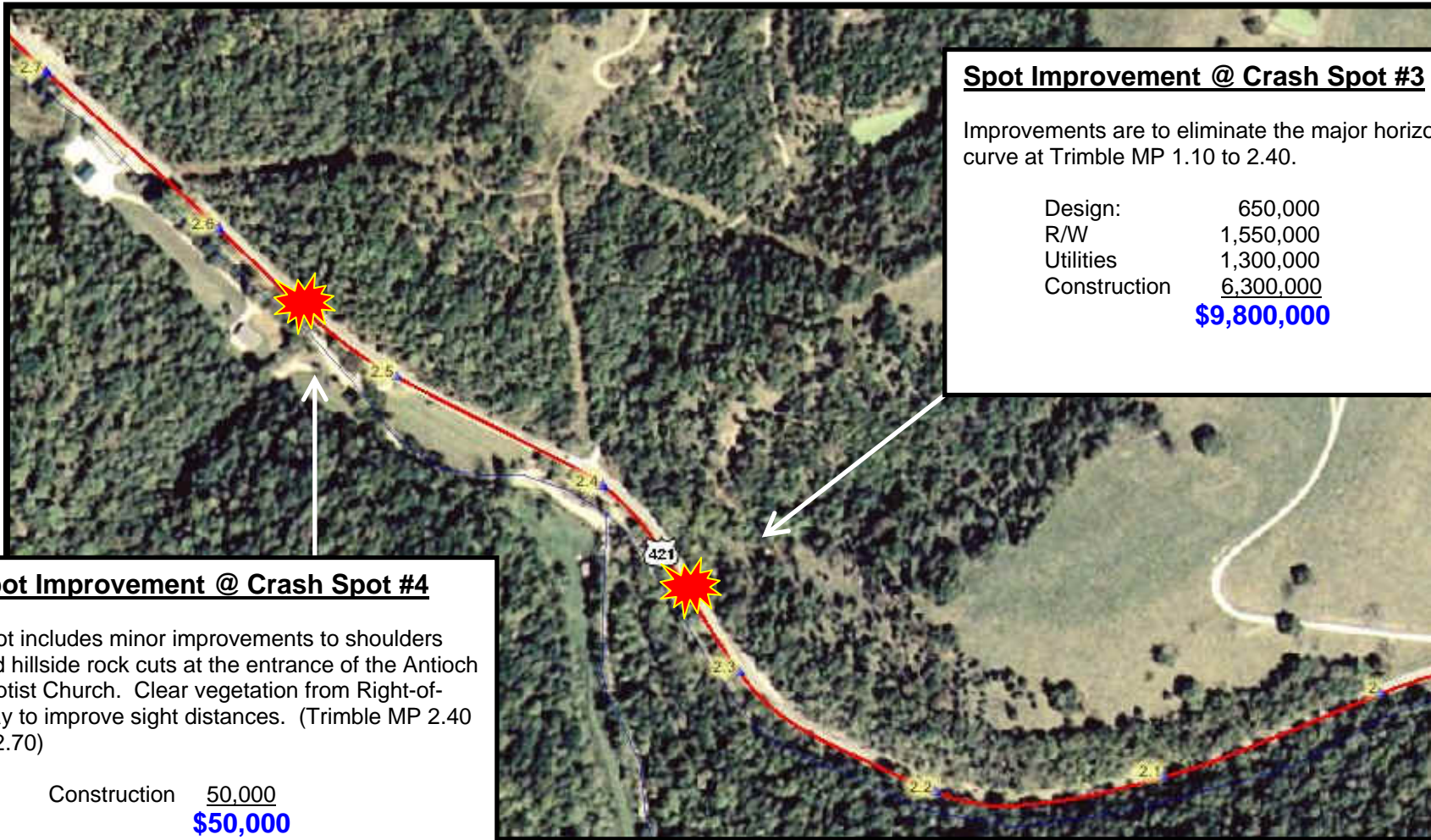
The field review did identify a spot south of this location with possible sight distance problems. Re-grade the roadway with shoulder improvements and clear vegetation. (Henry MP 24.60 to Trimble MP 0.10)

Design:	230,000
R/W	470,000
Utilities	470,000
Construction	1,410,000
	\$2,580,000



Spot Improvements

Alternate #3b Trimble & Henry Counties Item No. 5-147.00



Spot Improvement @ Crash Spot #3

Improvements are to eliminate the major horizontal curve at Trimble MP 1.10 to 2.40.

Design:	650,000
R/W	1,550,000
Utilities	1,300,000
Construction	6,300,000
	\$9,800,000

Spot Improvement @ Crash Spot #4

Spot includes minor improvements to shoulders and hillside rock cuts at the entrance of the Antioch Baptist Church. Clear vegetation from Right-of-Way to improve sight distances. (Trimble MP 2.40 to 2.70)

Construction	50,000
	\$50,000



Spot Improvements

Alternate #3b

Trimble & Henry Counties
Item No. 5-147.00



OPTION #1

Spot Improvement @ Crash Spot #5

Add turning lanes and widen the combined US 421/US 42 route for improved safety and flow through Bedford. (Trimble MP 6.70 to 6.80)

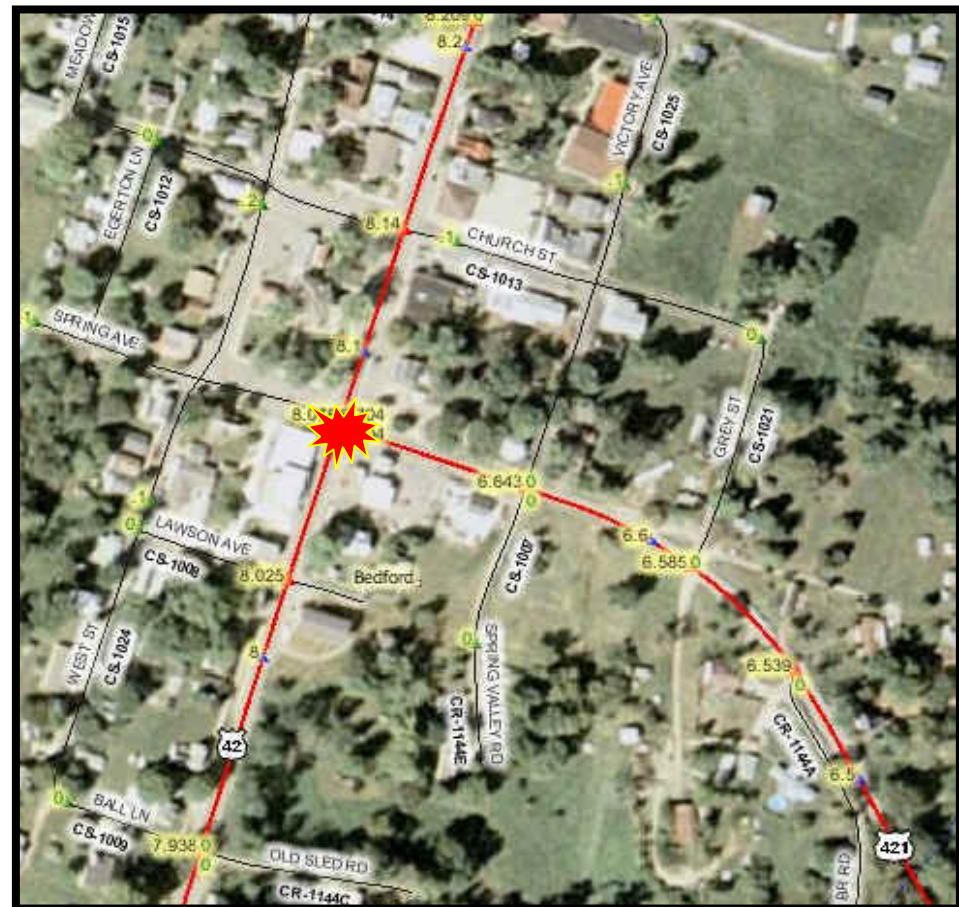
Design:	450,000
R/W	1,200,000
Utilities	720,000
Construction	4,776,000
	\$7,146,000

OPTION #2

Spot Improvement @ Crash Spot #5

Develop a new alignment between US 421 and US 42 so the approaches cross at and angle closer to 90 degrees. Move both US 421 approaches east near Hughes Drive. (Trimble MP 6.70 to 6.80)

Design:	600,000
R/W	1,440,000
Utilities	1,200,000
Construction	7,572,000
	\$10,812,000





Spot Improvements

Alternate #3b

Trimble & Henry Counties

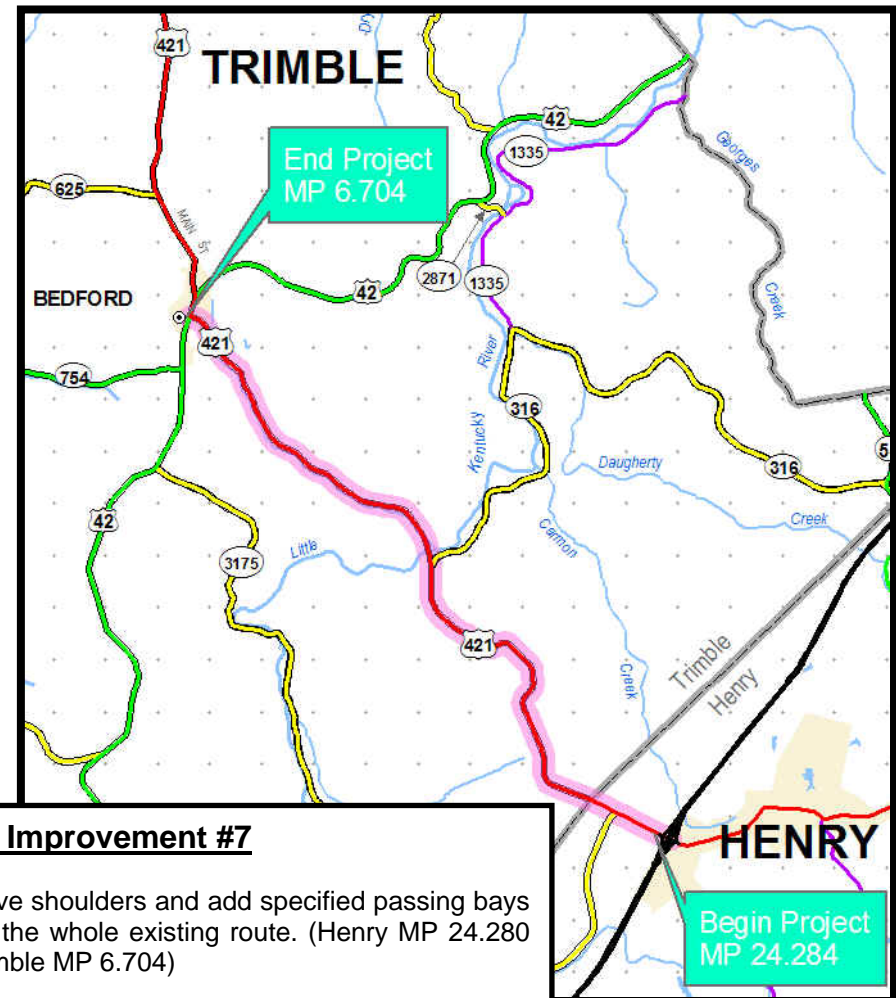
Item No. 5-147.00



Spot Improvement #6

Widen lanes and shoulders through this 40 MPH curve to current standards and soften curve radius. (Trimble MP 0.20 to 0.60)

Design:	200,000
R/W	400,000
Utilities	250,000
Construction	<u>1,200,000</u>
	\$2,050,000



Spot Improvement #7

Improve shoulders and add specified passing bays along the whole existing route. (Henry MP 24.280 to Trimble MP 6.704)

Design:	50,000
Construction	<u>200,000</u>
	\$250,000